

Covid19graphics 28

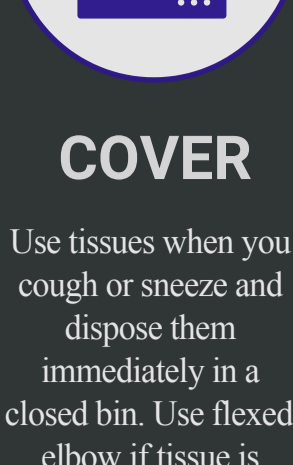
16 January 2021

COVID-19 Prevention Tips



WASH

Wash your hands frequently using soap for at least 20 seconds during activities during the lockdown. Use alcohol-based handrub.



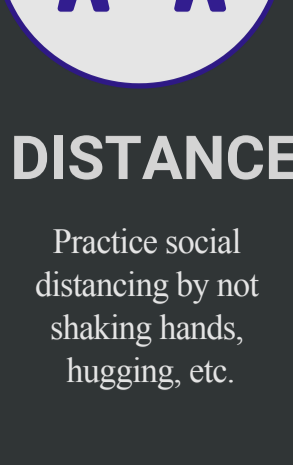
COVER

Use tissues when you cough or sneeze and dispose them immediately in a closed bin. Use tissue-elbow if tissue is unavailable.



AVOID

Avoid touching your mouth, eyes and nose, especially after contact with any surface.



DISTANCE

Practice social distancing by not shaking hands, hugging, etc.

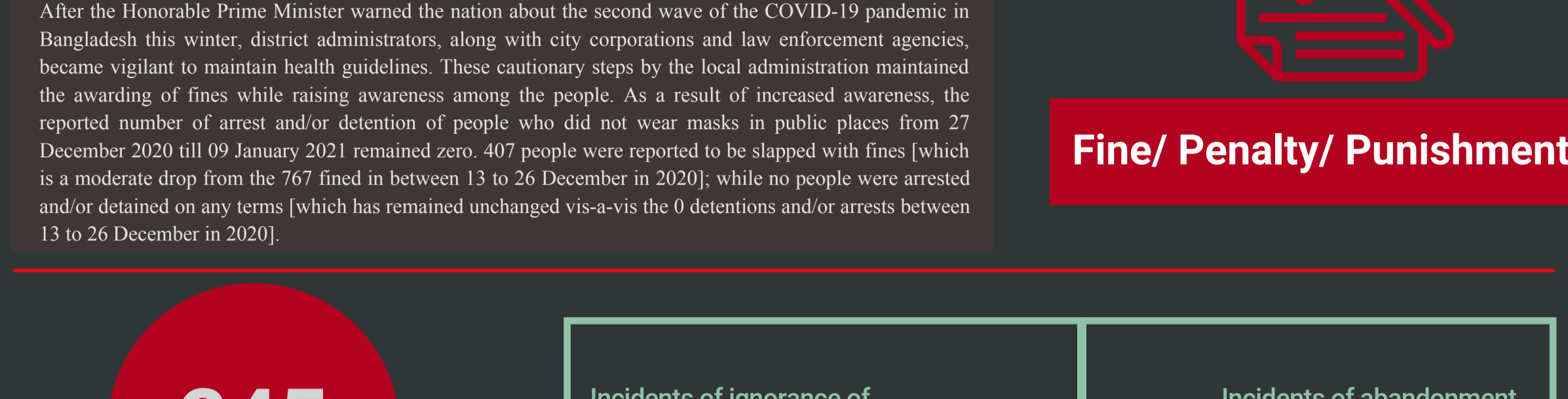
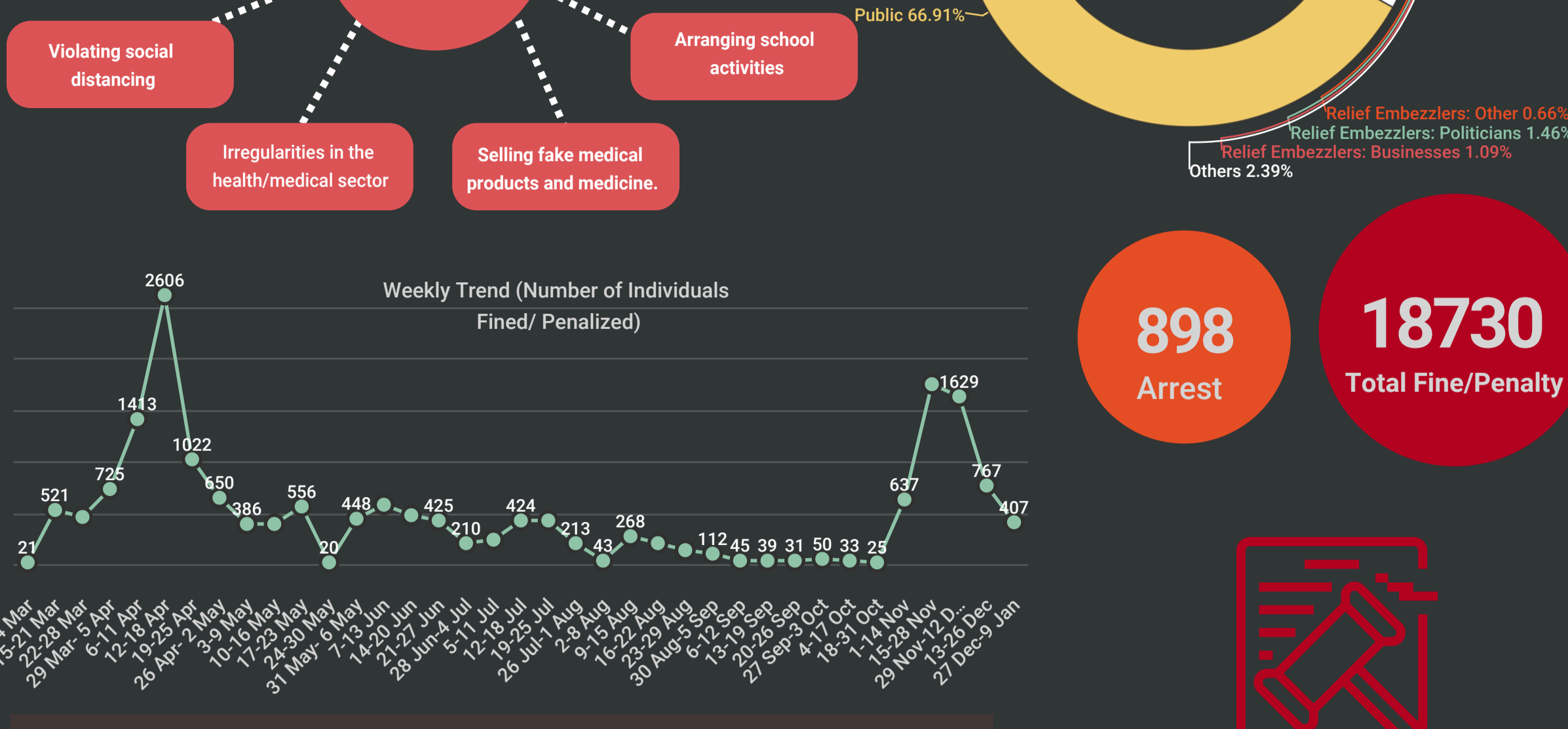


ISOLATE

Stay at home if you become ill and help prevent its spread.

Covid-19 Related Incident Mapping in Bangladesh

Update: 1 March 2020- 9 January 2021

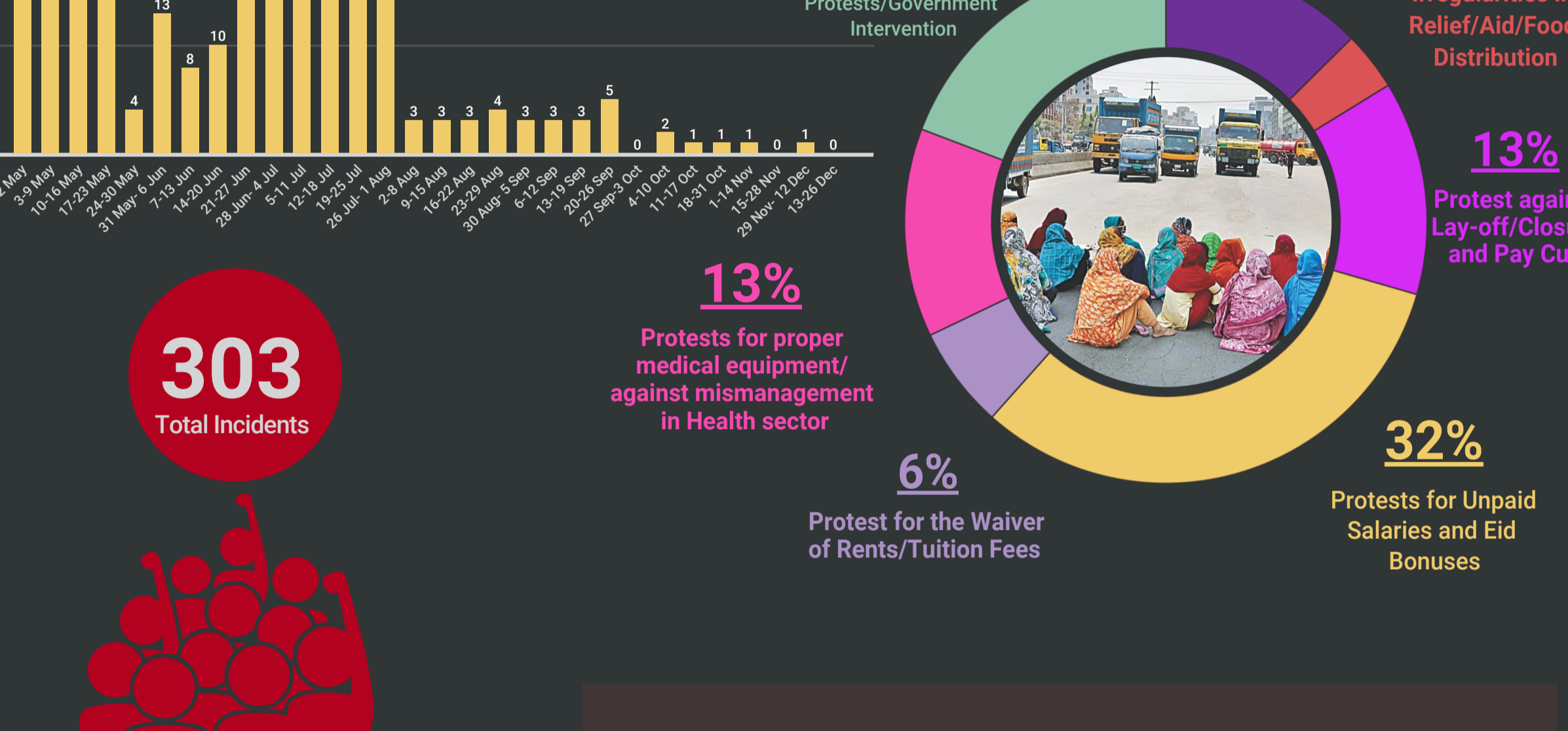


After the Honorable Prime Minister warned the nation about the second wave of the COVID-19 pandemic in Bangladesh this winter, district administrators, along with city corporations and law enforcement agencies, became vigilant to maintain health guidelines. These cautionary steps by the local administration maintained the awarding of fines while raising awareness among the people. As a result of increased awareness, the reported number of arrest and/or detention of people who did not wear masks in public places from 27 December 2020 till 09 January 2021 remained zero. 407 people were reported to be slapped with fines (which is a moderate drop from the 767 fined in between 13 to 26 December in 2020); while no people were arrested and/or detained on any terms (which has remained unchanged vis-a-vis the 0 detentions and/or arrests between 13 to 26 December in 2020).

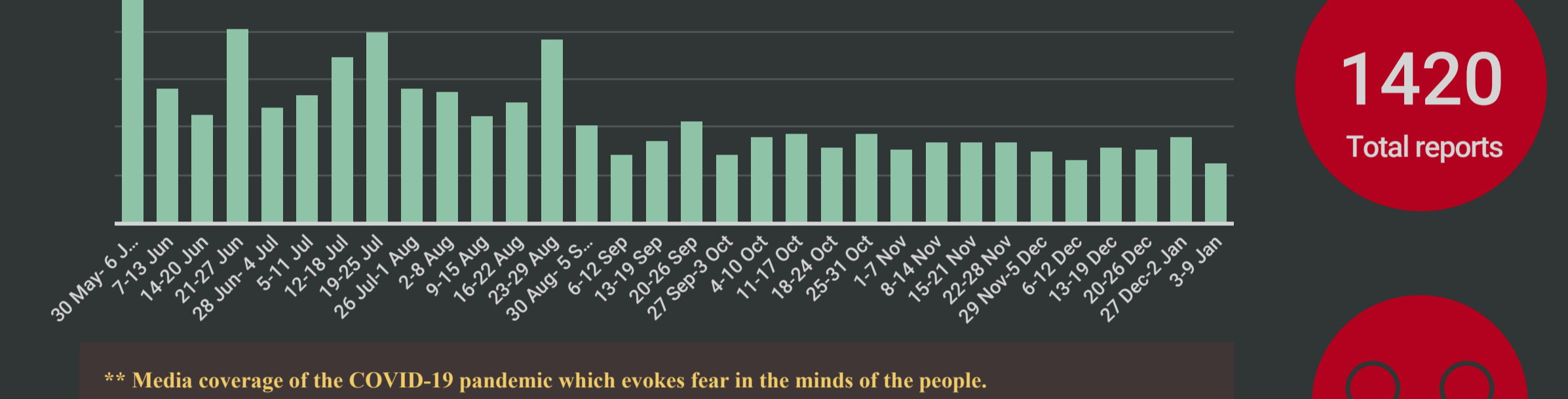


Verbal Abuse/ Social Stigma

*Weekly Trend: There was no social stigma related news report associated with COVID-19 from 27 December 2020 to 9 January 2021.



*Weekly Trend: There was no protest associated with the COVID-19 pandemic from 27 December 2020 to 9 January 2021.



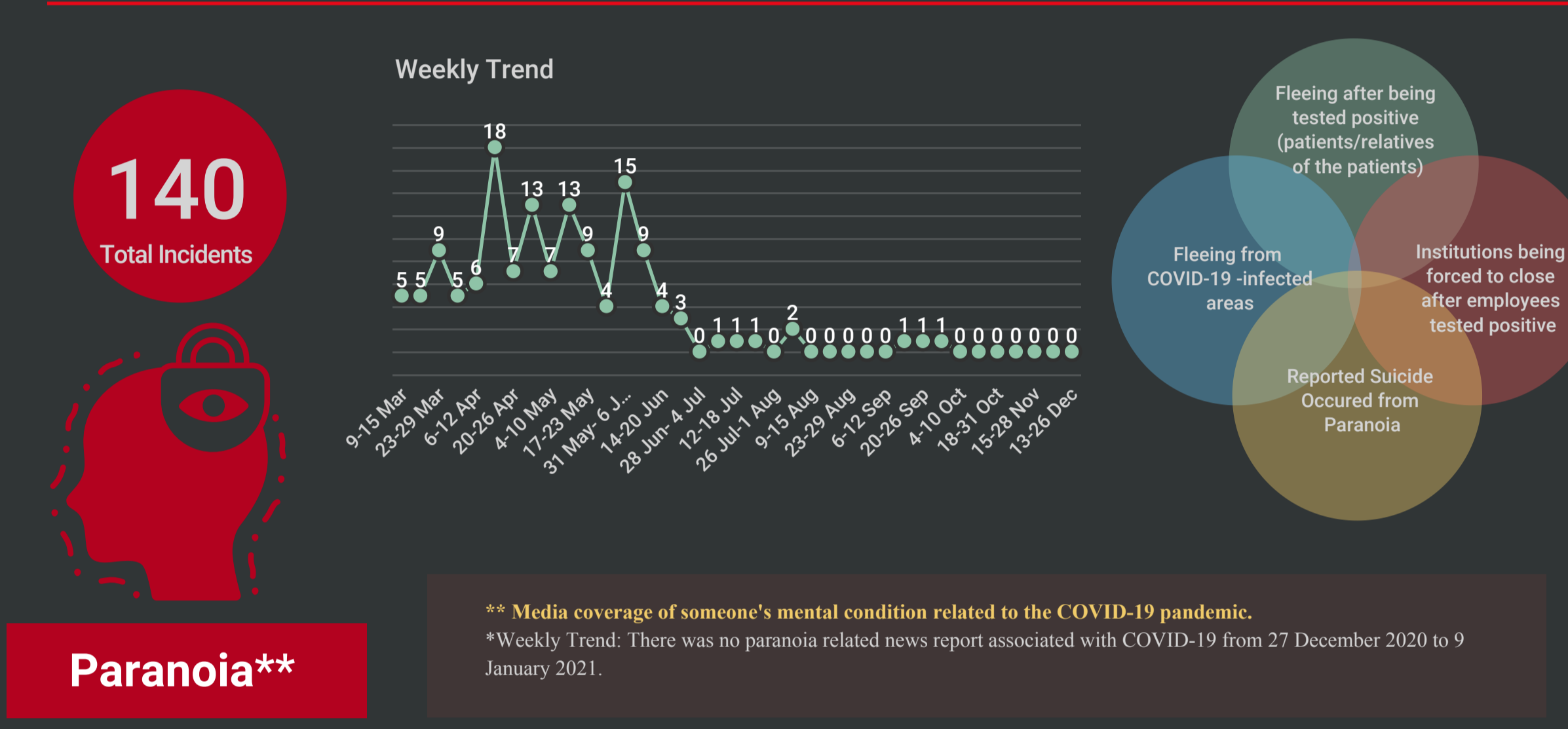
Fear**

** Media coverage of the COVID-19 pandemic which evokes fear in the minds of the people.

*Fig. The second wave of coronavirus is likely to reach its peak in Bangladesh between late January and early February next year, according to a new projection. During its peak, the number of daily cases may reach 14,000 and the demand for hospital beds may surge to around 8,000 per day, the projection finds, titled "Covid-19 in Bangladesh: Potential interventions and impacts".

*Fig. On average, 2,600 migrant workers returned home daily in December while a total of 4.08 Lakh such workers came back in the nine-month from April after losing their jobs due to this pandemic.

*Fig. New features have been announced in England and Scotland to prevent COVID 19. Meanwhile, the total number of deaths in Coronavirus in the world, including more than 9,000 new ones, has exceeded 1.7 million.



** Media coverage of someone's paranoia related to the COVID-19 pandemic.

*Weekly Trend: There was no paranoia related news report associated with COVID-19 from 27 December 2020 to 9 January 2021.

